

**N8118-500**

**PCIe SSD 800GB**

**Driver Install Guide**

# Contents

1. Preface .....	- 3 -
2. Installation of Windows Driver .....	- 4 -
3. Uninstallation of Windows Driver .....	- 7 -
3.1 Uninstall from "SetupNVMe.exe" .....	- 7 -
3.2 Uninstall from Control Panel .....	- 9 -

# 1. Preface

Thank you very much for purchasing our product.

This install guide explains how to install the driver necessary to use the PCIe SSD 800GB (N8118-500). Target Operating Systems of the product are as follows.

## ◆ Operating System

Abbreviated designation	Target Operating System
Windows Server 2012	Microsoft® Windows Server® 2012 Standard
Windows Server 2012	Microsoft® Windows Server® 2012 Datacenter
Windows Server 2012	Microsoft® Windows® Storage Server 2012 Standard
Windows Server 2012 R2	Microsoft® Windows Server® 2012 R2 Standard
Windows Server 2012 R2	Microsoft® Windows Server® 2012 R2 Datacenter
Windows Server 2012 R2	Microsoft® Windows® Storage Server 2012 R2 Standard

## ◆ Trademarks and copyright

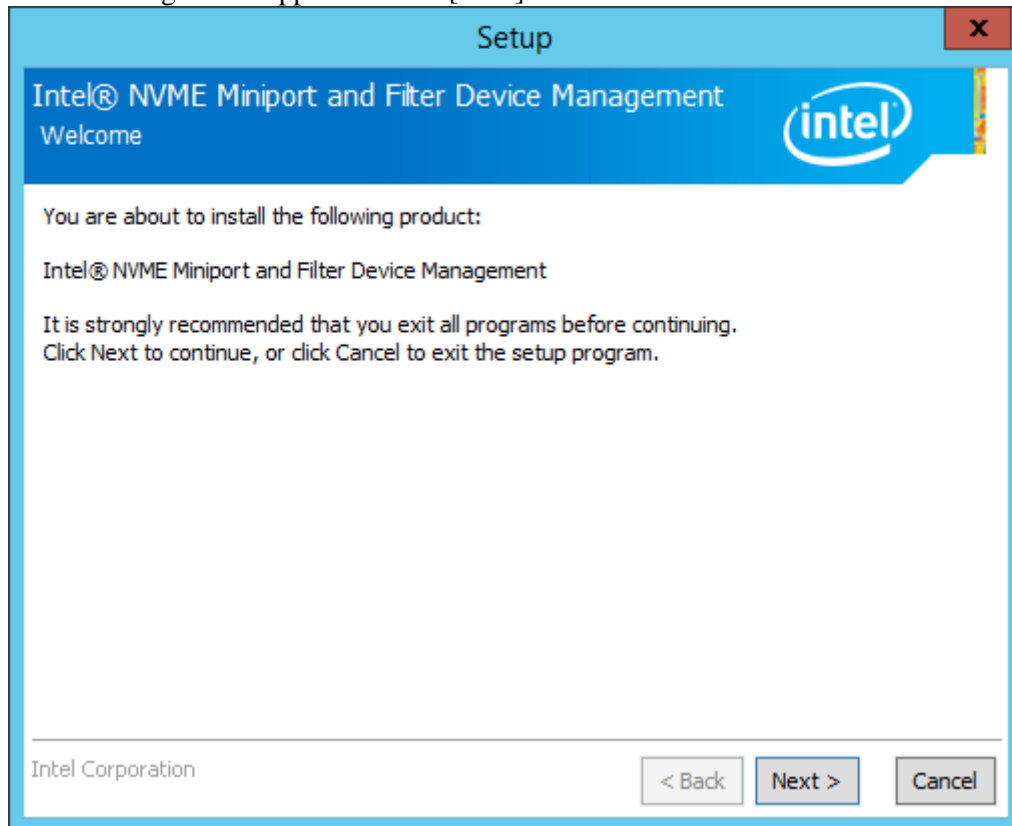
Microsoft and its logos, and Windows ,Windows Server are registered trademarks or trademarks of the Microsoft Corporation in the U.S. and other countries.

Intel is registered trademarks of the Intel Corporation in the United States.

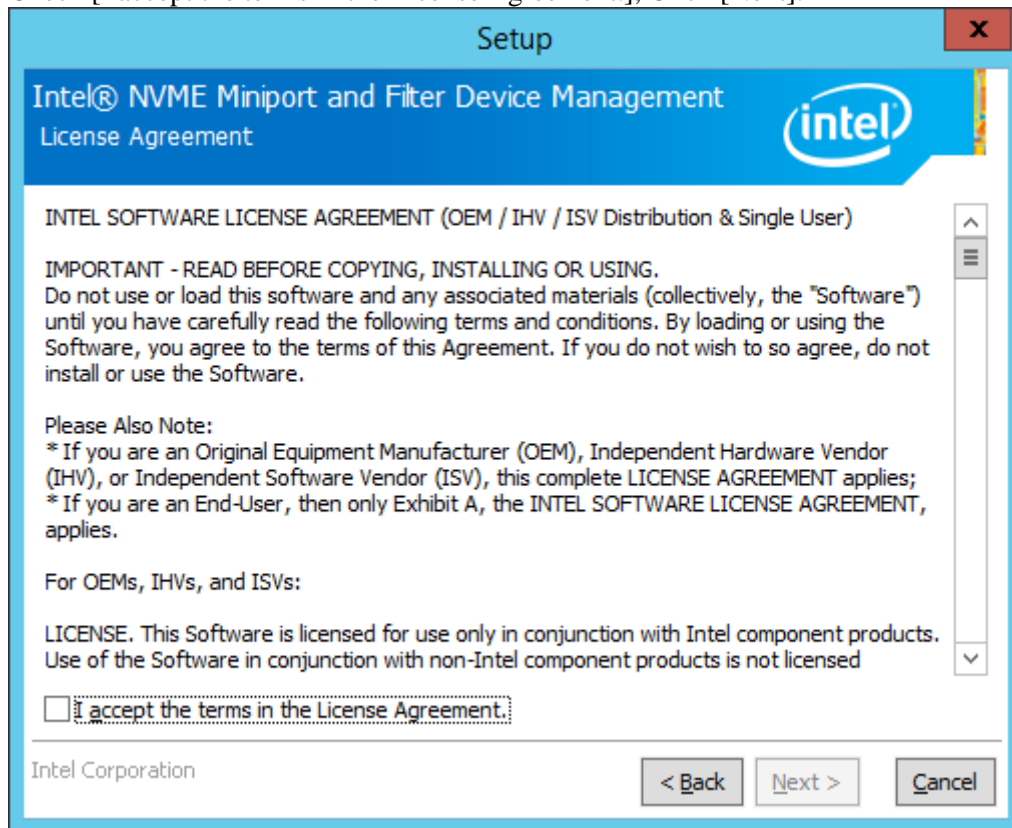
## 2. Installation of Windows Driver

This section explains how to install the driver.

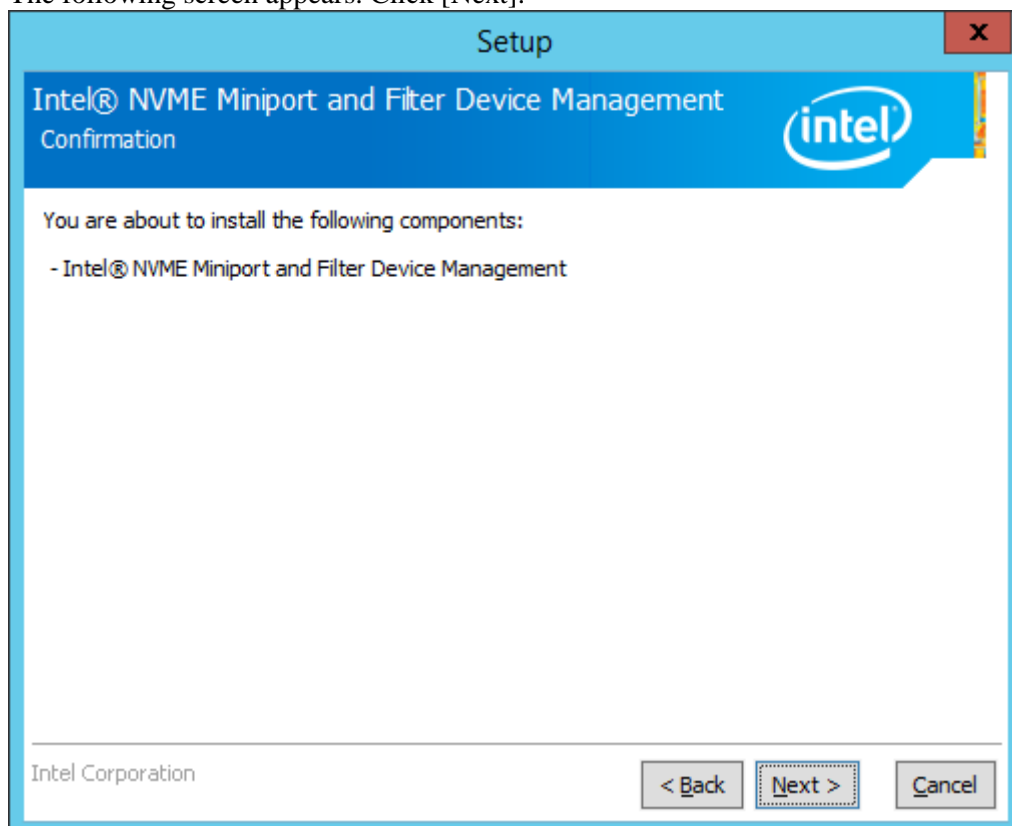
1. After connect PCIe SSD(N8118-500) to the system, Boot the system and sign in with administrator.
2. Unzip “422583-B01\_XXXXX.zip” (XXXXX: arbitrary numbers) and execute “\Installer64\SetupNVMe.exe” using an appropriate tool such as Explorer.
3. The following screen appears. Click [Next].



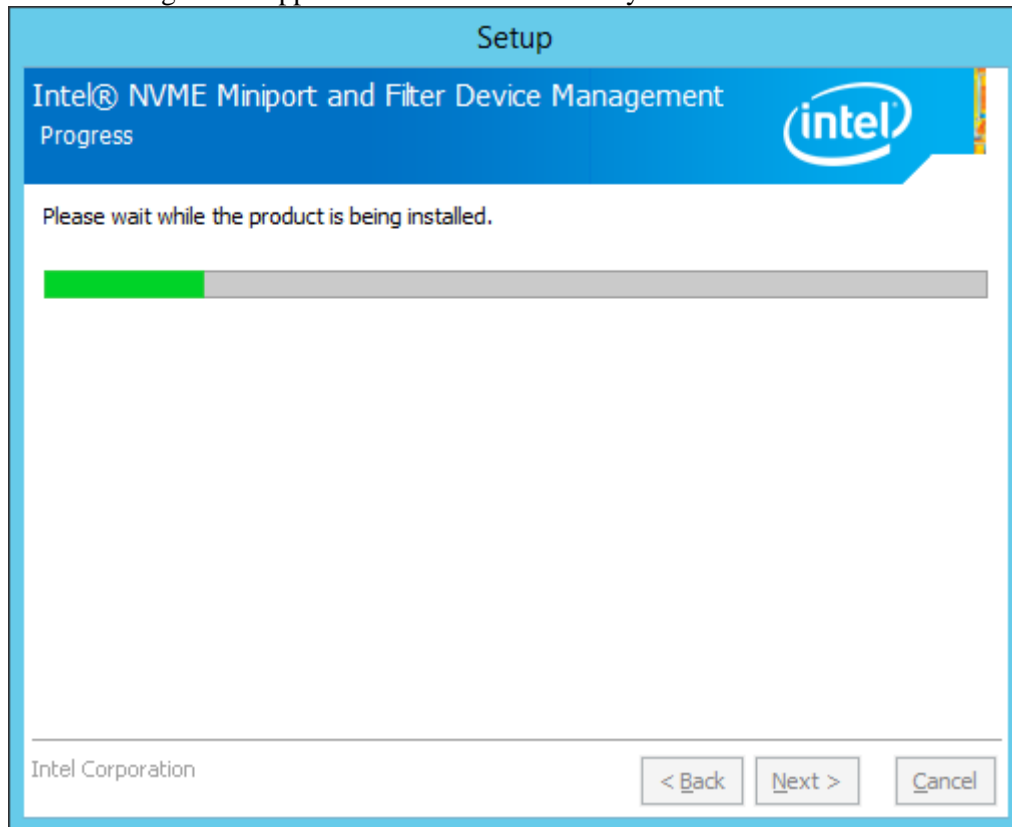
4. The following screen appears. Confirm [INTEL SOFTWARE LICENSE AGREEMENT], Check [I accept the terms in the License Agreement.], Click [Next].



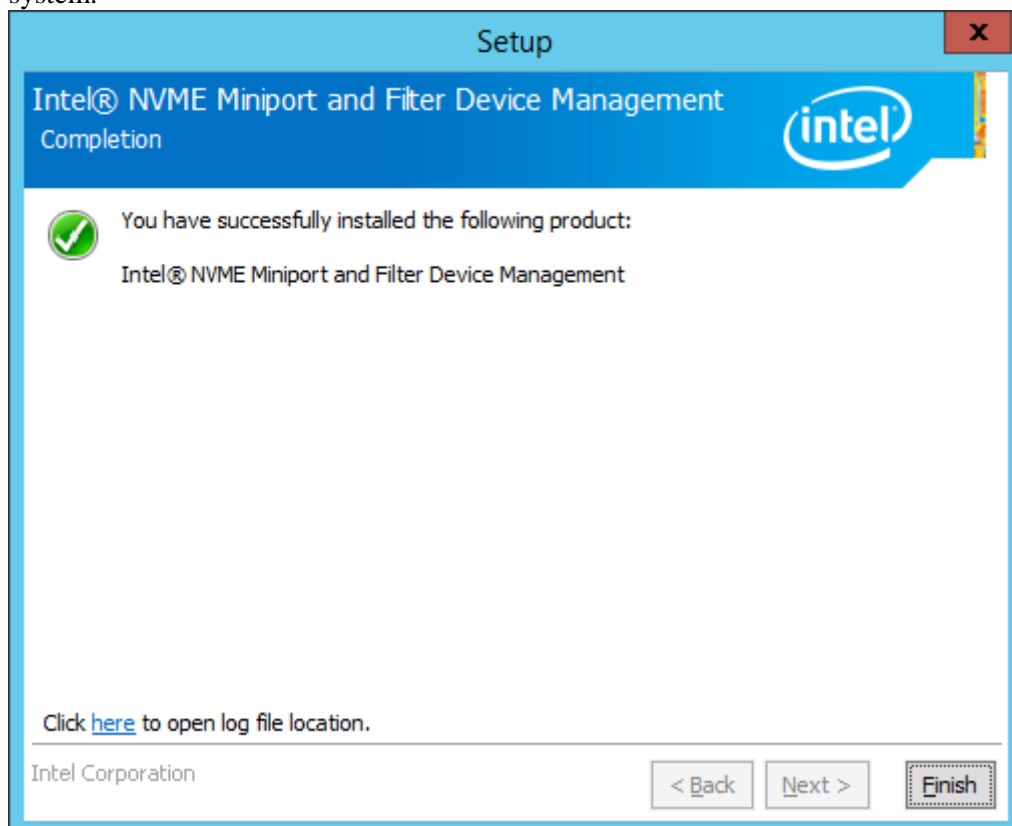
5. The following screen appears. Click [Next].



6. The following screen appears. Driver is automatically installed.



7. After driver is installed, the following screen appears. Click [Finish], and reboot the system.

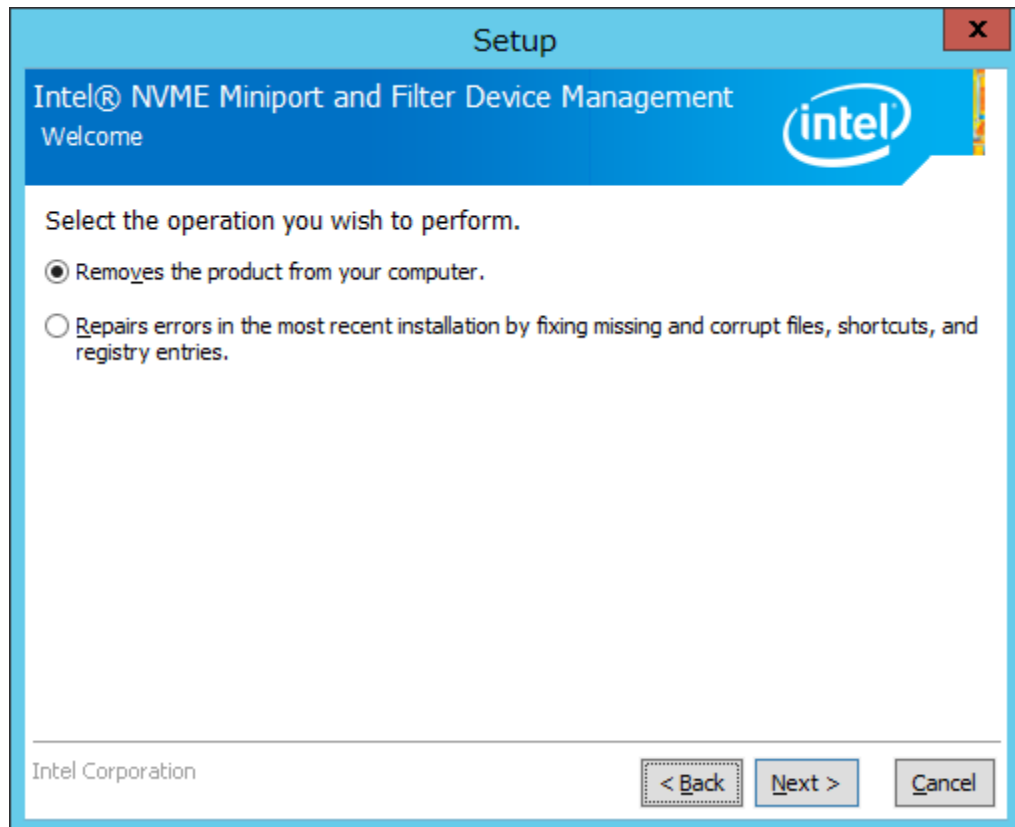


## 3. Uninstallation of Windows Driver

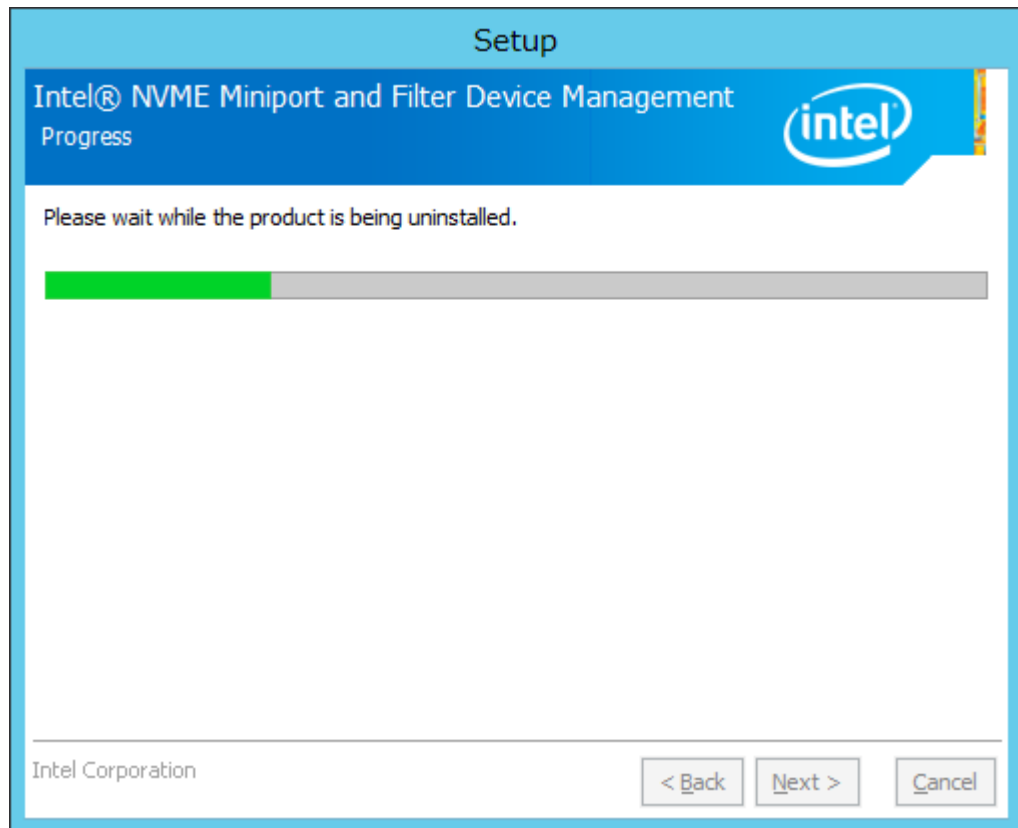
This section explains how to uninstall the driver.

### 3.1 Uninstall from “SetupNVMe.exe”

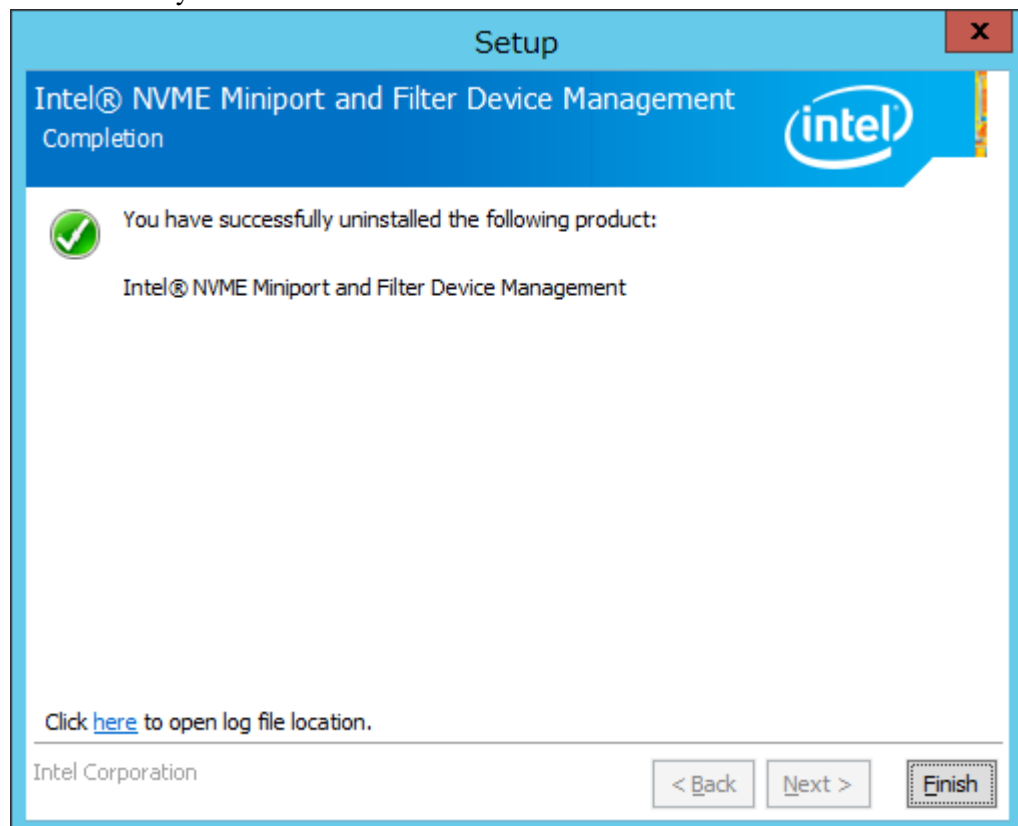
1. Sign in with the Administrator.
2. Execute “\Installer64\SetupNVMe.exe” using an appropriate tool such as Explorer.
3. The following screen appears. Check [Removes the product from your computer.], and Click [Next].



4. The following screen appears. Driver is automatically uninstalled.



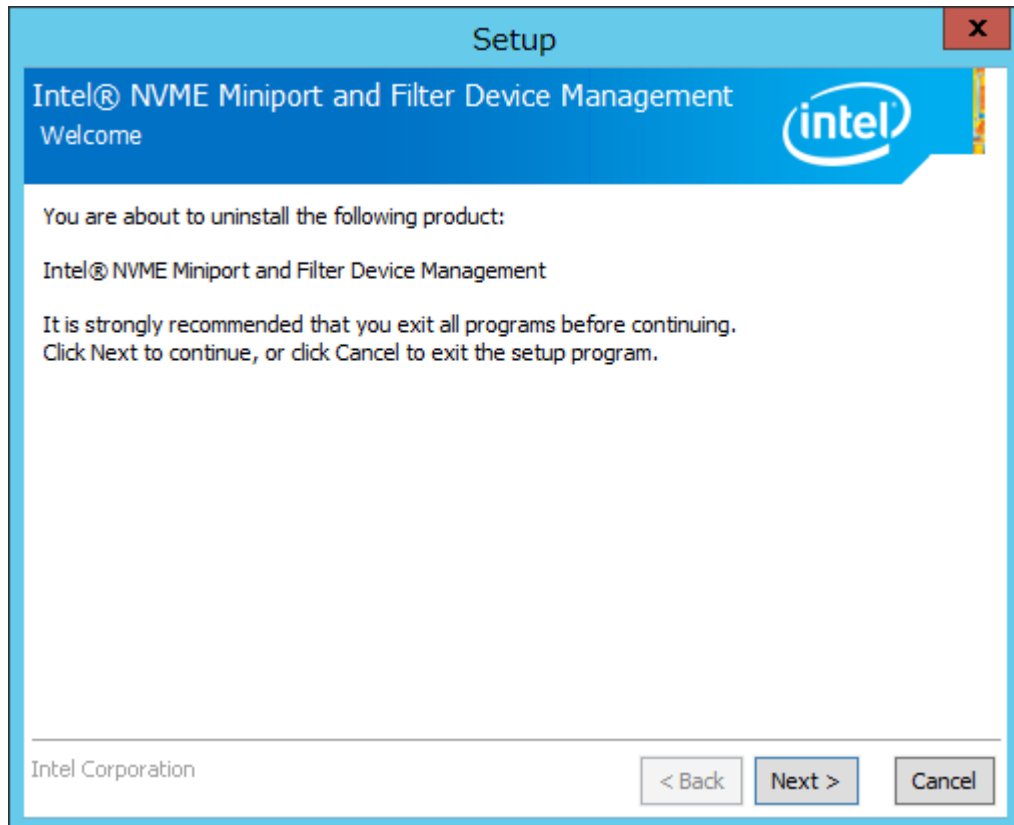
5. After driver is installed, the following screen appears. Click [Finish], and reboot the system.



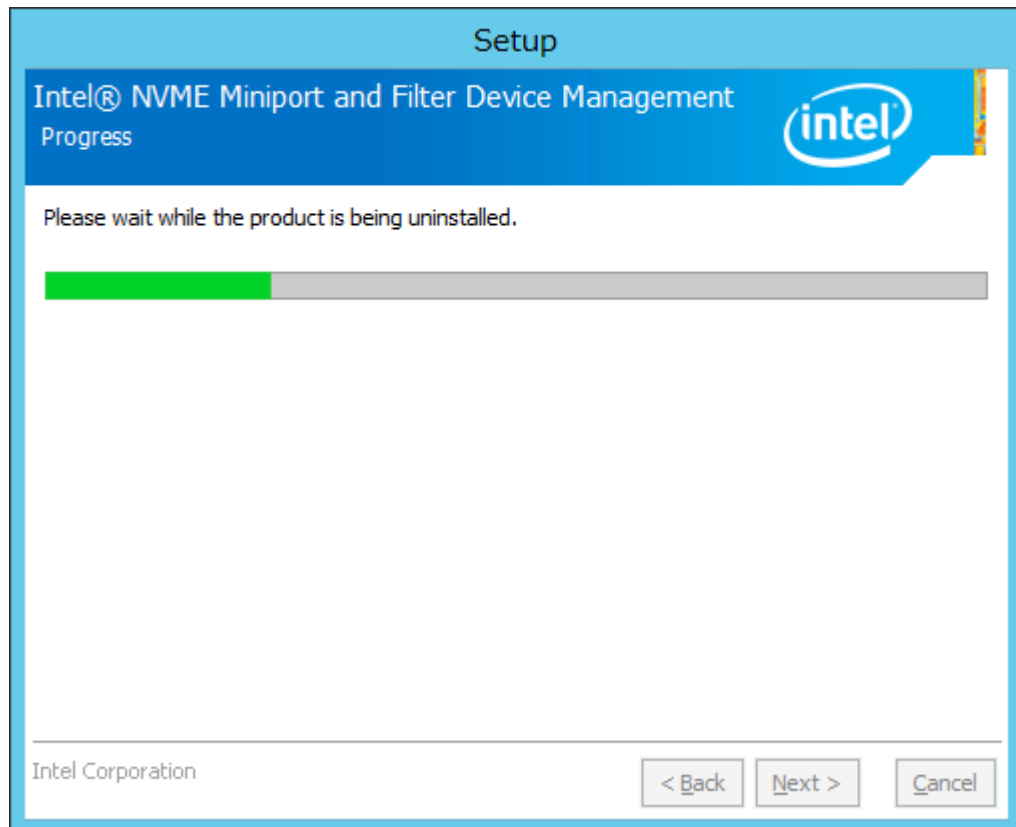


## 3.2 Uninstall from Control Panel

1. Sign in with the Administrator.
2. Select [Start] > [Control Panel].
3. Change [View by] to “Category”.
4. Click [Uninstall a program].
5. Select the [Intel® NVME Miniport and Filter Device Management] entry.
6. Click [Uninstall].
7. The following screen appears. Click [Next].



8. The following screen appears. Driver is automatically uninstalled.



9. After driver is uninstalled, the following screen appears. Click [Finish], and reboot the system.

