

Express5800/E120f-M  
Express5800/E120g-M

Intel® Chipset Device Software 10.1.2.19  
Installation Guide

## Contents

1.	Preface .....	3
1.1	The target Server .....	3
1.2	Target software .....	3
1.3	Target Driver Version .....	3
1.4	Trademarks Information .....	3
2.	Workflow Chipset driver update process.....	4
3.	Preparation.....	5
3.1	Workflow preparation process .....	5
3.2	Confirmation of Chipset driver version .....	6
3.3	Preparations of module .....	7
3.4	Stop the EXPRESSCLUSTER service .....	7
4.	Chipset driver update.....	8
4.1	Installation of Chipset Driver .....	8
4.2	Confirmation method after the update.....	9
5.	After Chipset driver install.....	10
5.1	Workflow after Chipset driver install .....	10
5.2	Start the EXPRESSCLUSTER service.....	10
6.	Notice.....	11
6.1	About the operation by remote desktop .....	11
6.2	Account of operation.....	11
6.3	After applying Starter Pack .....	11

# 1. Preface

This installation guide explains the update procedure of the chip set driver. Protect the procedure of mention to this book, and, please carry out update.

## 1.1 The target Server

Express5800/E120f-M  
Express5800/E120g-M

## 1.2 Target software

The target OS's are as follows.

abbreviated name	Product of the target
Windows Server 2008 R2	Microsoft® Windows Server® 2008 R2 Standard Microsoft® Windows Server® 2008 R2 Enterprise
Windows Server 2012	Microsoft® Windows Server® 2012 Standard Microsoft® Windows Server® 2012 Datacenter
Windows Server 2012 R2	Microsoft® Windows Server® 2012 R2 Standard Microsoft® Windows Server® 2012 R2 Datacenter

※Server Core is inapplicable

## 1.3 Target Driver Version

The version of a chipset driver targeted for update is as follows.

Chipset Driver name	Target Devices	Target Version
Intel(R) C610 series/X99 chipset USB Enhanced Host Controller	Express5800/E120f-M	9.4.2.1014
	Express5800/E120g-M	10.1.2.10

## 1.4 Trademarks Information

Microsoft, Windows, Windows Server, Hyper-V are either registered trademarks or trademarks of Microsoft Corporation in the United States and/or other countries.

Intel® is a trademark or registered trademarks of Intel Corporation or its subsidiaries in the United States and other countries.

EXPRESSCLUSTER® X is a registered trademark of NEC Corporation.

All other product, brand, or trade names used in this publication are the trademarks or registered trademarks of their respective trademark owners.

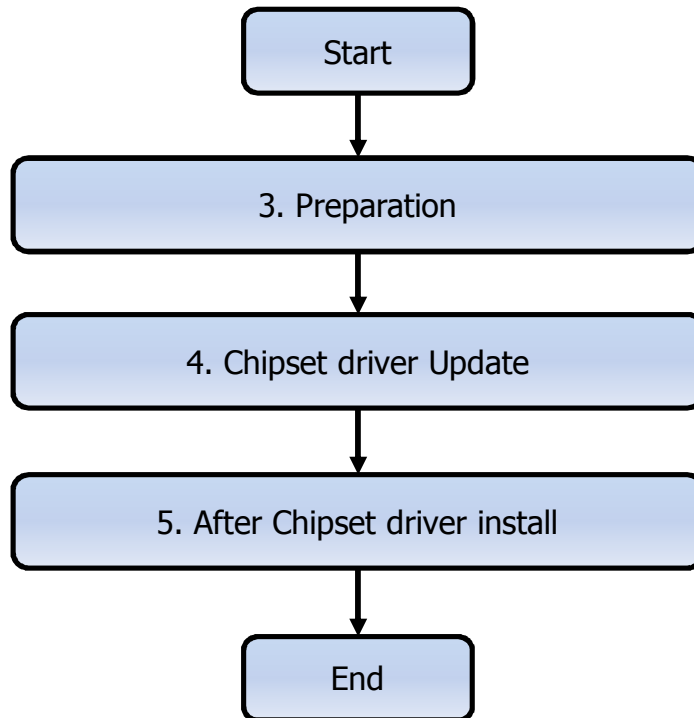
In addition, we do not specify TM, R mark in the text.

## 2. Workflow Chipset driver update process

This chapter explains a flow of the update process for Chipset Driver.  
Please update it in reference to the following figures

Important

- This procedure becomes the procedure that assumed that I use EXPRESSCLUSTER. If your system doesn't use EXPRESSCLUSTER skip procedure about EXPRESSCLUSTER (section3.5 and 5.2).



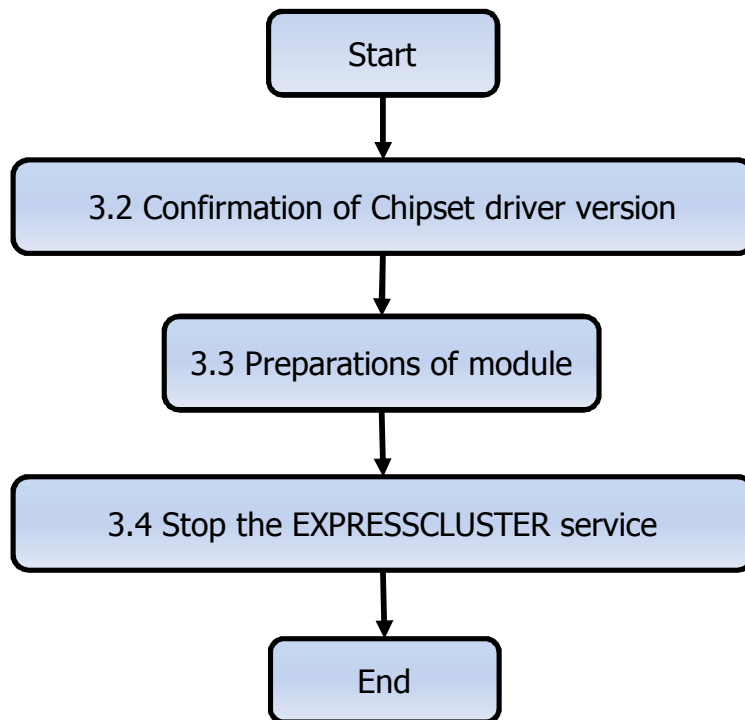
### 3. Preparation

This chapter explains necessary work before updating a driver.

Important

- The following work needs log-on in administrator rights from a local console, and please carry it out. The work that using the remote-desktop function of the OS does not supported.
- In the environment that does not use EXPRESSCLUSTER, if you are using Hyper-V, please cancel setting of shut down and the automatic start by all guest OS's before carrying out the update of the chipset driver.
- Please go after closing other windows by all means when you carry out this work.
- When it is not settled even if you carry out this procedure, a different problem may occur. When you are not settled, please refer to a store or the maintenance service company.

#### 3.1 Workflow preparation process

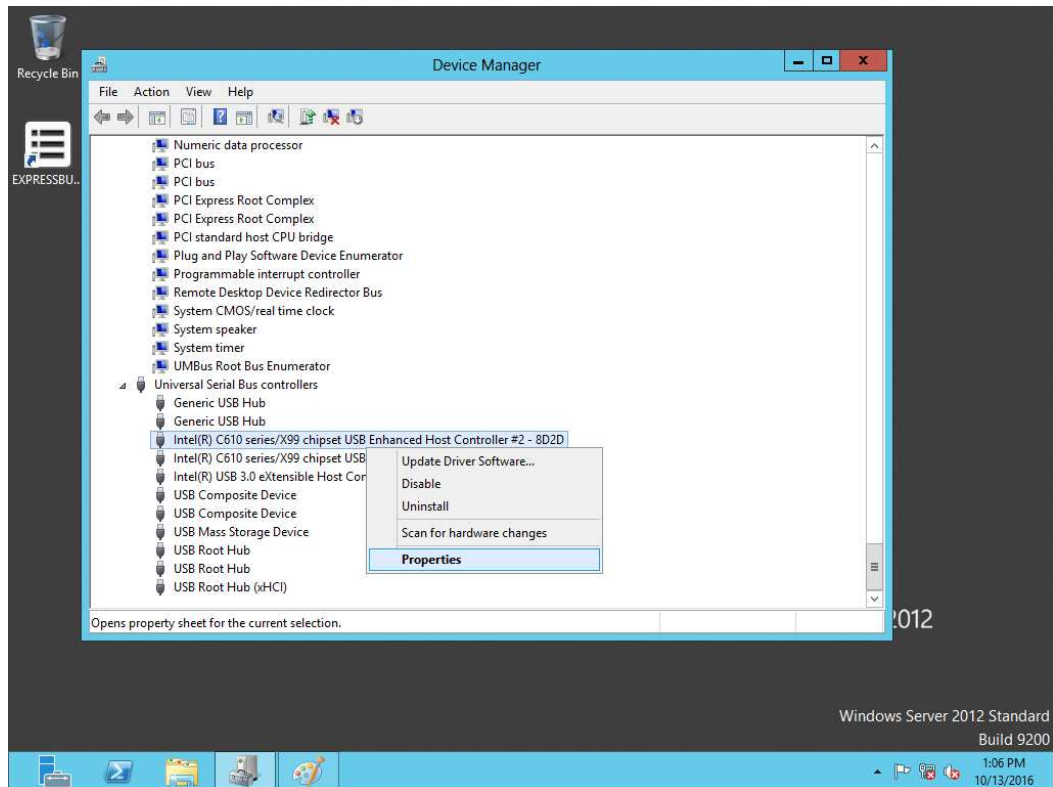


## 3.2 Confirmation of Chipset driver version

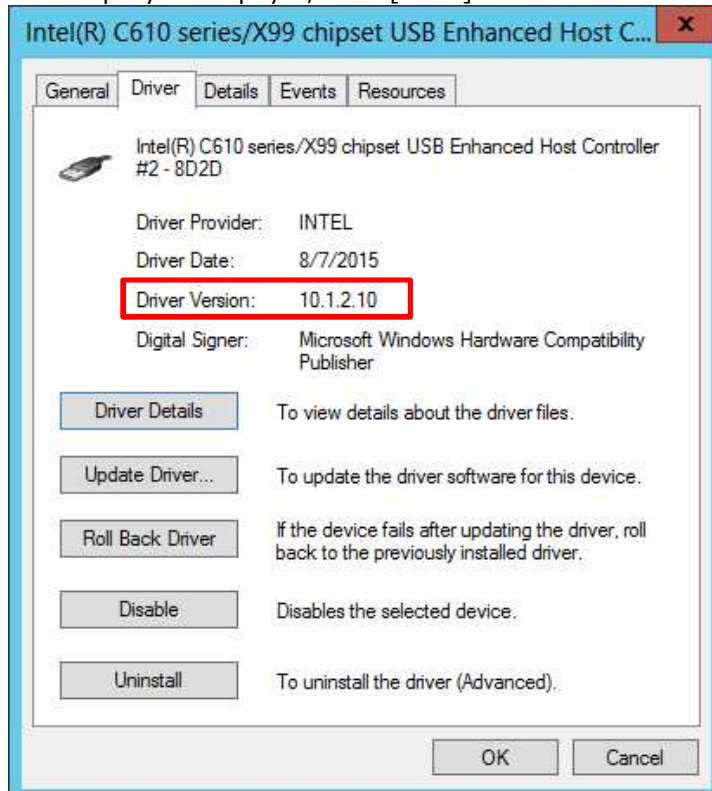
This clause explains the version confirmation method of the chipset driver.

With reference to the following procedures, please confirm the version of the chip set driver.

1. Start [Device Manager], after that right-click [Intel(R) C610 series/X99 chipset USB Enhanced Host Controller] from [Universal Serial Bus Controllers], and select [Property]



2. After Property has displayed, select [Driver] Tab and confirm driver version.



Target Devices	Driver Version
E120f-M	9.4.2.1014
E120g-M	10.1.2.10

### 3.3 Preparations of module

This clause explains preparation for a Driver update module of Chipset Driver  
With reference to the following procedures, please prepare for a module for update.

- i. Download a update module from the following sites.  
<http://www.58support.nec.co.jp/global/download/GVO-013911-G02/>
- ii. Create "temp" folder under system drive, and defreeze zip file to "temp".

### 3.4 Stop the EXPRESSCLUSTER service

This section explains the procedure to stop EXPRESSCLUSTER service.

Check the following EXPRESSCLUSTER manual, stop EXPRESSCLUSTER services.

<http://www.nec.com/en/global/prod/expresscluster/en/support/manuals.html>

1. Select your EXPRESSCLUSTER version
2. Choose Reference Guide
3. Open Chapter10 The system maintenance information

## 4. Chipset driver update

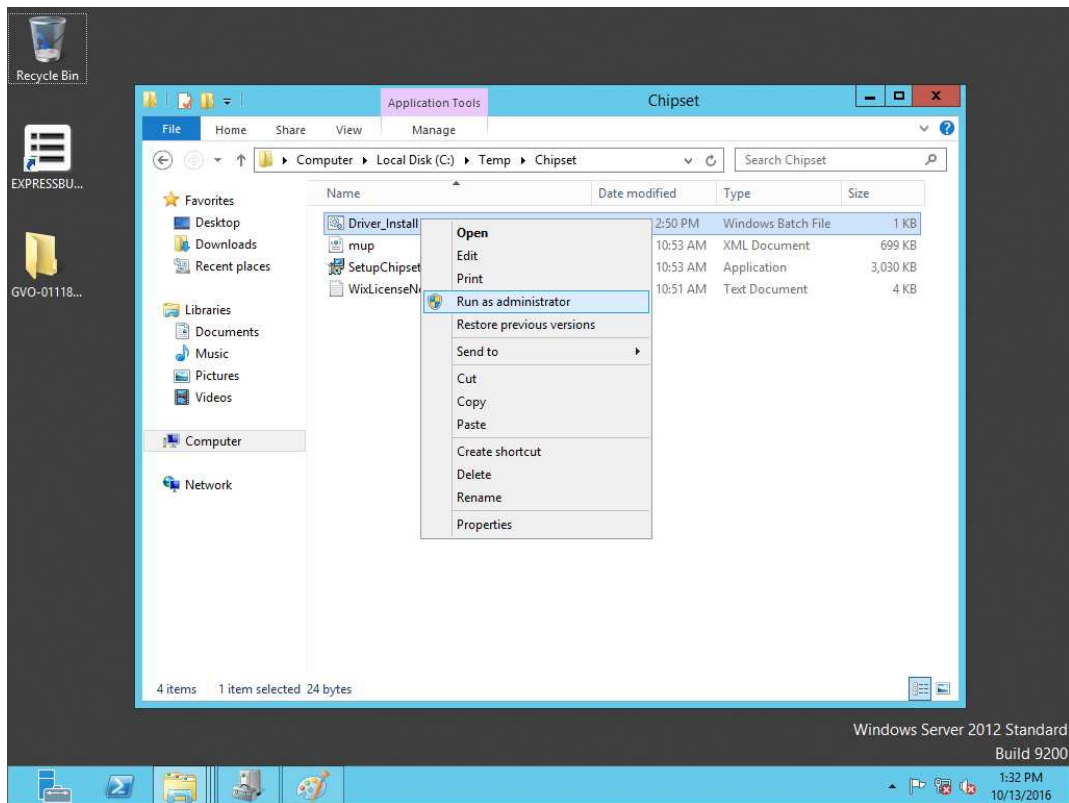
This chapter explains the update procedure of the Chipset driver.

Important

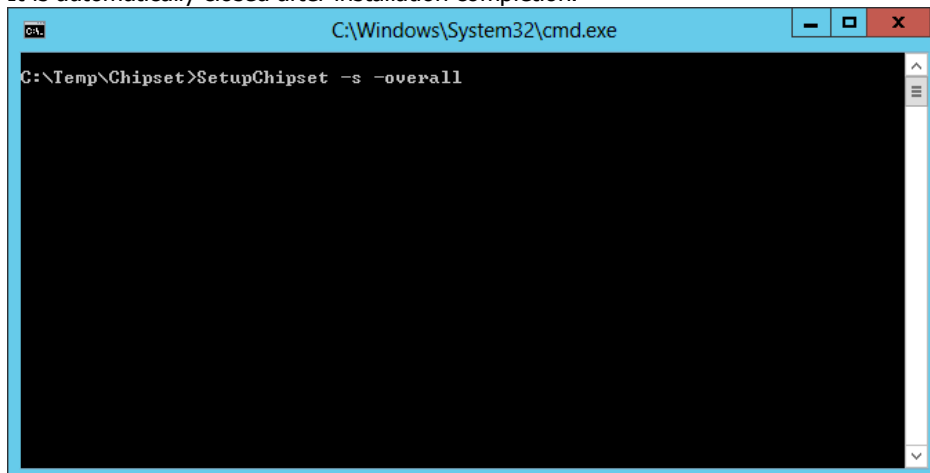
- The following work needs log-on in administrator rights from a local console, and please carry it out. The work that using the remote-desktop function of the OS does not supported.

### 4.1 Installation of Chipset Driver

1. log on in a user with the administrator rights.(ex. Administrator)
2. Right-click [Driver\_Install.bat] which you copied in Preparation(section 3.2), and select "Run as Administrator"



3. The window of the chart below opens. Wait a minute. It is automatically closed after installation completion.



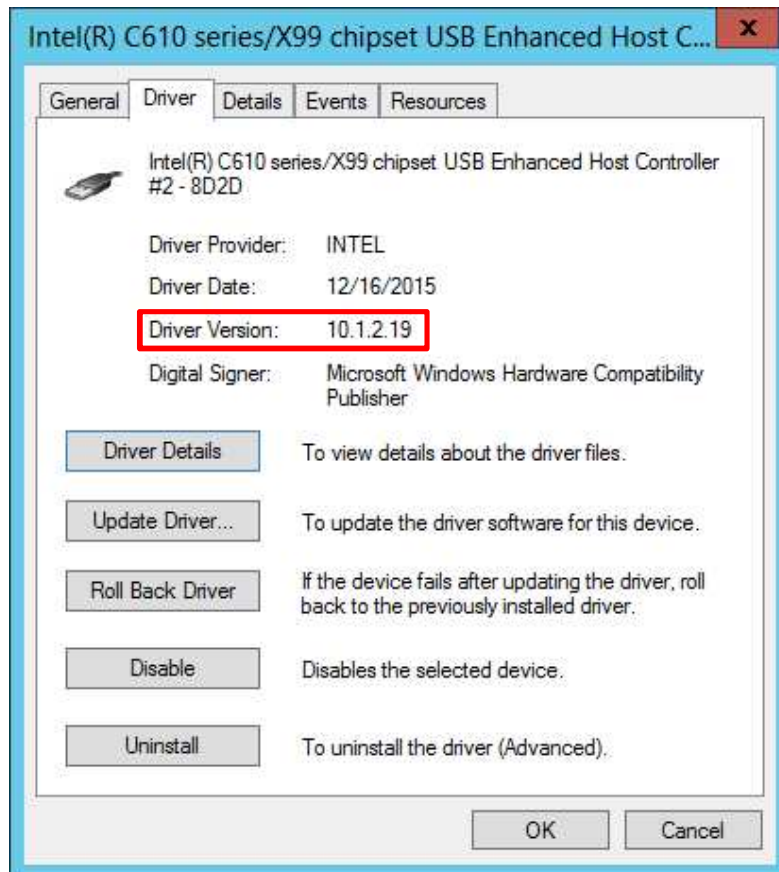


- 4 . If a message promoting the reboot of the system is displayed after update completion, please reboot a system according to instructions.  
If a message does not appear, please carry out the reboot of the system from "start" of the screen lower left.

## 4.2 Confirmation method after the update

Open up the property of the Chipset driver in a procedure of section 3.2, confirm that the version of the chip set driver was changed to "10.1.2.19".

Update work is completion if updated normally.

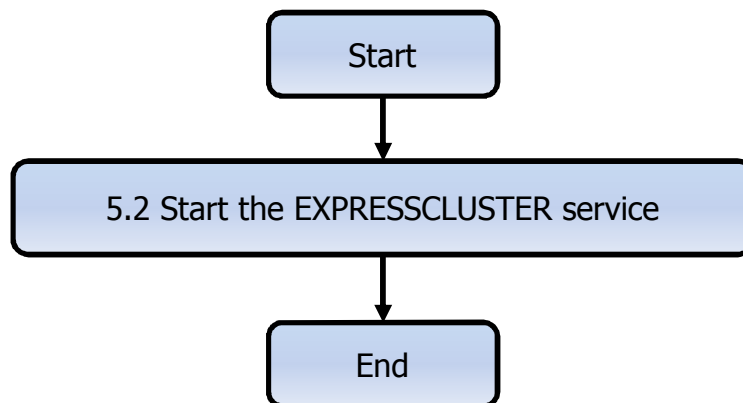


## 5. After Chipset driver install

Important

- The following work needs log-on in administrator rights from a local console, and please carry it out. The work that using the remote-desktop function of the OS does not supported.
- In the environment that does not use EXPRESSCLUSTER, if you are using Hyper-V, please cancel setting of shut down and the automatic start by all guest OS's before carrying out the update of the chipset driver.

### 5.1 Workflow after Chipset driver install



### 5.2 Start the EXPRESSCLUSTER service

This section explains the procedure to start EXPRESSCLUSTER service.

Check the following EXPRESSCLUSTER manual, start EXPRESSCLUSTER services.

<http://www.nec.com/en/global/prod/expresscluster/en/support/manuals.html>

1. Select your EXPRESSCLUSTER version
2. Choose Reference Guide
3. Open Chapter10 The system maintenance information

## 6. Notice

This Chapter describes notice of updating of the chipset driver.

### 6.1 About the operation by remote desktop

For all the operation described in this document, it has to be performed from the local console. Remote desktop of OS or remote operation tool is not supported.

### 6.2 Account of operation

For all the operation described in this document, it has to be performed by logging on with an administrator account. In addition, open command prompt or Windows PowerShell as Administrator.

### 6.3 After applying Starter Pack

When you apply Starter Pack of EXPRESSBUILDER according to the procedure of this document after having updated a chip set driver, the version of the chip set driver may be restored.

In that case, according to the procedure of this document, please update the Chipset driver again.